

167 PICKET PIN LANE  
SNOWMASS, COLORADO



*GatewaytoSnowmass.com*



**BERKSHIRE HATHAWAY** | Aspen Snowmass Properties  
HomeServices



*Living area with massive stone fireplace*

## **167 Picket Pin Lane**

**What:** It feels like a home inspired by a John Denver song, but this beautifully remodeled true Rocky Mountain home was actually once owned by another well-known celebrity. Perched on a hillside, views from the lovely deck and from inside the home overlook the verdant Snowmass Creek Valley and capture the Continental Divide. The professionally designed décor complements log and Colorado stone accents to create a warm and wonderful mountain ambiance. The main living area and the spacious, sumptuous master suite occupy the same level. Guests have their own quarters downstairs. There are three fireplaces to warm by and everyone will be lulled to sleep by the soothing sounds of Snowmass Creek.

**Where:** In a private setting in idyllic Snowmass Creek Valley, just 1.5 miles from Highway 82—your pathway to all the recreation, culture, shopping, and dining in Aspen and Basalt.

**Why:** The quintessential Colorado mountain home.

**Numbers:** \$1,095,000, furnished



*Open living area with exposed beam ceilings and Snowmass Creek valley views*





*Dining area*

### Interior Features

- The views from the main level are gorgeous. Look out to Williams Mountain, the Snowmass Creek Valley, the Continental Divide, and the idyllic, protected open space bordering the creek. Vaulted ceilings with exposed log beams, a wood-burning fireplace surrounded by a massive Colorado stone wall, and bamboo flooring create the template for the warm, mountain decor. Settle into the leather sofas or gather around the game table surrounded by high-backed black leather chairs.
- A sliding glass door opens to a lovely outdoor living and dining deck complete with hot tub and (of course) views.
- A transitional-style chandelier of oiled bronze and opaque glass suspends above a beautiful, large wood dining table surrounded by handsome western-style wood chairs with leather and etched metal accents.
- The beautiful kitchen is thoughtfully designed with plenty of dark granite counter space and an abundance of cherry wood cabinetry. The backsplash is comprised of porcelain tile with lovely, leaf-themed accent tiles. Two pendant lamps suspend above the large, granite-topped center island with two leather and hide bar chairs.
- All stainless steel appliances include a Kenmore Elite flat-top electric range, oven, warming oven, and range hood; Whirlpool refrigerator with water & ice dispenser and freezer drawer; Kenmore Elite dishwasher; and built-in Sharp Carousel microwave.
- The inviting powder room is very “mountain chic” with a glass vessel sink, dark granite countertop, cherry wood cabinetry, and a leather-framed mirror.
- The mudroom with tile floor is at-the-ready with a bench for kicking off boots and a coat closet. A door with a window leads outside. The adjacent laundry room features cherry wood cabinetry, a stacked Kenmore washer & dryer, and a window to the hillside.



*Kitchen with stainless appliances and cherry cabinetry*





*Large master suite with fireplace and comfortable seating area*





*Master bath*

- Comfortable and well-appointed, the private master suite is your own slice of heaven. Bamboo floors are decorated with hide rugs. Two oversized cushy and comfy oversized leather chairs and ottomans adorned with pillows and throws invite you to settle in and read on a cold winter's night. You will be warmed by the gas-log fireplace. A large screen Samsung TV is wall-mounted above. Listen to the soothing sounds of Snowmass Creek from the inviting, well-dressed King log bed.
- A large walk-in closet/dressing room features built-in chests of drawers and a big window for natural light.
- The master bath has it all—His and Her vanities with granite countertops and travertine backsplashes, sleek golden oak cabinetry, oiled bronze & Italian glass lighting, a travertine tile shower with decorative insets and mosaic tile floor, and a soaking tub surrounded by travertine.



*Powder room*



*Family room with fireplace*

- The front door with picture window opens to an inviting, cozy family room with wood burning fireplace surrounded by stacked stone, slate tile flooring, and western décor that includes leather and hide furnishings.
- Guests will be delighted to stay in bedroom #1—so beautifully furnished with a handsome Queen log bed, a sliding glass door to mountain views, and its own separate entry door with picture window.
- Guest bedroom #2 features a well-dressed Queen sleigh bed and views to the trees and mountains.
- The full bath is thoughtfully designed with a double, granite-topped vanity, a tub/shower surrounded by 12" ceramic tile, and a separate water closet.
- Warm mountain décor, two twin log beds, a sofa, and a door to a private patio and views of the Snowmass Creek Valley to the Continental Divide highlight guest bedroom #3. There is also an extra closet for storage here.
- The en suite bath features a granite-topped vanity with rectangular sink and a shower of ceramic tile, European glass and mosaic tile.



*Front door*





*Downstairs guest room*



*Downstairs guest bath*



*Downstairs guest room 2*



*Downstairs guest room 3*



### Exterior Features

- The sights and sounds of mountain living are all yours here. Take in beautiful, protected vistas of the Snowmass Creek Valley and the Continental Divide while overlooking scenic pastoral views. Listen to the gentle rush of Snowmass Creek.
- A wonderful deck with cushioned built-in bench seating, outdoor dining furniture, and a hot tub is great for taking the party outside.
- One of the guest bedrooms has a private patio.
- Colorful perennial gardens border the lush lawn adjacent the deck. Rock away in the free-standing, log love seat swing.
- Mature aspen grace the 1.1 acre property and the hillside behind the home is covered in scrub oak and pine.
- The exterior is comprised of log and stucco.

### Exterior Features

- Highway 82 is only 1.5 miles away. The charming shops, galleries and restaurants of downtown Basalt are 15 minutes away. The world-class skiing, culture and nightlife of Aspen and Snowmass are a 20 to 25 minute drive.



*Deck with hot tub*



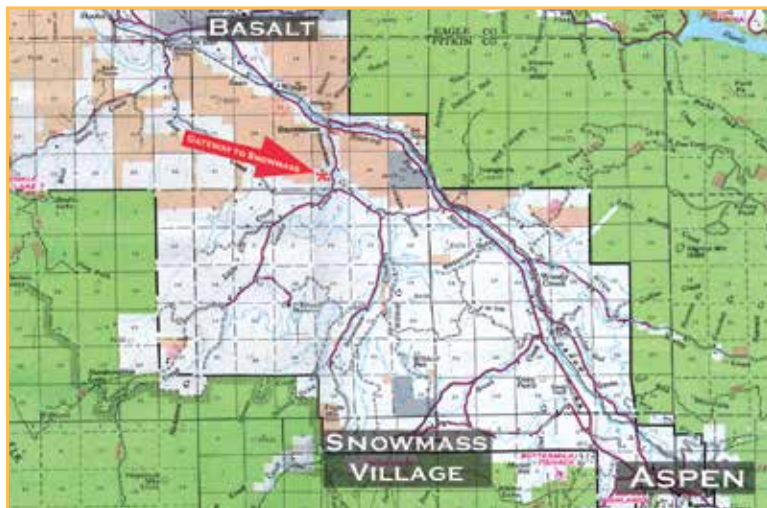







# REAL ESTATE ON HIGHER GROUND

<b>Legal Description:</b>	GATEWAY OF SNOWMASS MESA BLOCK: 1 LOT: 9 FILING 1
<b>Street Address:</b>	167 Picket Pin Lane; Snowmass, CO 81654
<b>Lot Size:</b>	1.1 acres
<b>Square Feet (Heated Living):</b>	3265
<b>Year Built/Renovated:</b>	1971/2005
<b>Bedrooms/Baths:</b>	4/3½
<b>Fireplace:</b>	3 woodburning
<b>Parking:</b>	Two-car garage
<b>Decks/Patios:</b>	Deck with hot tub
<b>Laundry:</b>	Room
<b>Heating:</b>	Baseboard; electric, radiant
<b>Water:</b>	Community
<b>Extras:</b>	Landscaping, lawn sprinklers, outdoor hot tub/spa, softener
<b>Occupant:</b>	Owner
<b>Property Taxes:</b>	\$6,268 (2017)
<b>Homeowner Fees:</b>	No
<b>Price:</b>	\$1,095,000, furnished
<b>Disclosure:</b>	Sold furnished: Property to be sold furnished with the exception of artwork, personal items and other misc furnishing including the master bed.
<b>Terms:</b>	Cash, or terms otherwise acceptable to sellers
<b>MLS#:</b>	150463
<b>Website:</b>	GatewaytoSnowmass.com



*DISCLOSURES: Information herein deemed reliable, but not guaranteed. Due to differences in measurement methods, neither Seller nor Broker can warrant the square footage of any structure or the size of any land being purchased. Broker measurements are for marketing purposes and are not measurements for loan, valuation or any other purpose. If exact square footage is a concern, the property should be independently measured.*

 © 2018 BHH Affiliates, LLC. An independently owned and operated franchisee of BHH Affiliates, LLC. Berkshire Hathaway HomeServices and the Berkshire Hathaway HomeServices symbol are registered service marks of HomeServices of America, Inc.® Equal Housing Opportunity. Information not verified or guaranteed. If your home is currently listed with a Broker, this is not intended as a solicitation.

Tom Carr | 970.379.9935 | [tom@BHHSAspenSnowmass.com](mailto:tom@BHHSAspenSnowmass.com)



**BERKSHIRE HATHAWAY** | Aspen Snowmass Properties  
HomeServices

Aspen 534 E. Hopkins Avenue | 970.922.2111 • Next to the Gondola Plaza 555 E. Durant Avenue, Suite 5A | 970.925.5400  
Snowmass Village Next to Alpine Bank | 970.923.2111 • [BHHSAspenSnowmass.com](http://BHHSAspenSnowmass.com)