

ASSAY HILL LODGE #630
SNOWMASS VILLAGE, COLORADO



SnowmassMtnView.com



BERKSHIRE HATHAWAY | Aspen Snowmass Properties
HomeServices



The living area

Assay Hill Lodge #630

What: A sophisticated, contemporary residence with prime slope-side views and the luxurious amenities and services of a world-class international hotel. Stylish and turnkey with an efficient kitchen to enjoy meals from the comfort of your home. A double-sided fireplace adds warmth and ambiance to the living room and bedroom suite. The sunny deck overlooks the chair lift and Assay Hill, making this one of the most sought-after locations within the hotel. On the premises enjoy the full-service concierge, award winning dining, coffee bar, spa, fitness facilities and slopeside pool terrace with heated pool, hot tub and cabanas with firepits.

Where: Assay Hill Lodge is slopeside to its namesake – the Assay Hill chairlift takes you to the Elk Camp gondola or Base Village

Why: A sleek condominium with the luxuries of a world-class hotel.

Numbers: \$495,000, furnished



Quaint sitting area overlooking Assay ski trail



Custom cabinetry in the kitchen with plenty of storage



View from the balcony



Bedroom with two-sided glass-front fireplace



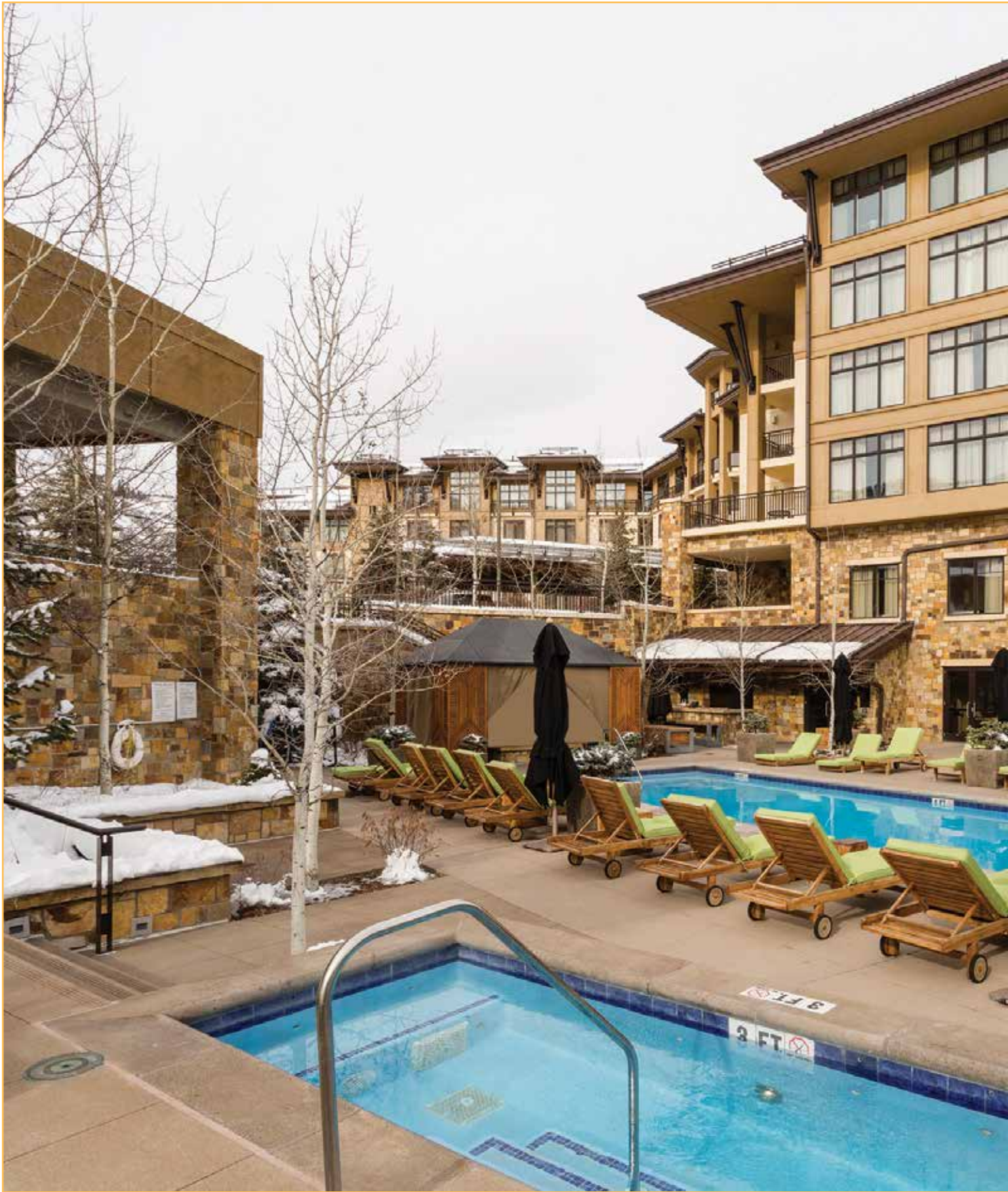
Bedroom overlooks the private deck



Large bath with storage

Interior Features

- The dark porcelain tile entry flows into the efficiency kitchen with black honed granite counters, stainless steel sink, Wolf 2-burner flat top stove, Viking microwave, generous Sub-Zero refrigerator with 2 freezer drawers, and Bosch dishwasher.
- Adjacent the galley- style kitchen, a closet conceals a stackable Bosch washer/dryer.
- Natural stone surrounds the two-sided gas fireplace in the living room. Above is a high-definition TV and DVD with on-demand programming. Custom-designed furnishings include a queen-size sleeper sofa for the “extras”.
- The sumptuous bedroom suite features a king bed dressed in double-sided pillow top mattresses, Egyptian cotton bed linens, a feather comforter, and a rich warm throw. Fall asleep to the warm glow from the glass-front fireplace. Wake up to views of Assay Hill.
- The bedroom is also equipped with a high-definition TV and DVD player with on-demand programming.
- In the luxurious bath, the deep soaking tub with black honed granite surround will be a welcome sight after a day on the slopes. The double vanity counters are comprised of black honed granite. Glass mosaic tiles enclose the generous shower.

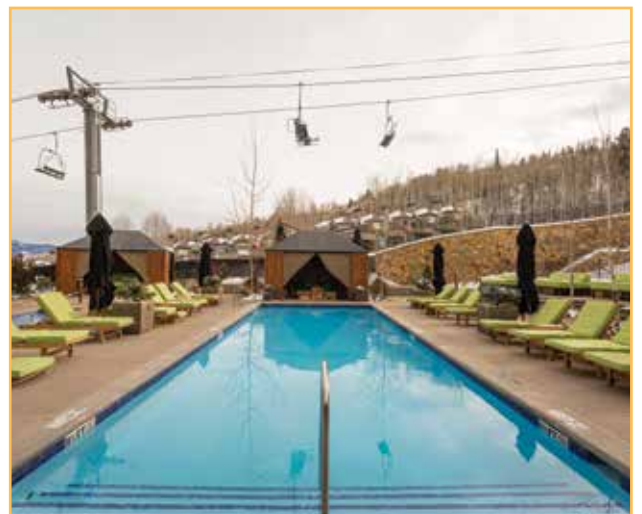




Relax anytime of the year on the slopeside pool patio

RECREATION SERVICES

- A slopeside swimming pool, hot tub, cabanas with fire pits and an adjacent bar and grill offer year-round fun.
- An opulent 7,000-square-foot wellness spa offers a selection of holistic wellness experiences and a meditative relaxation lounge amid an infinity pool and waterfall.
- A comprehensive fitness center includes cardiovascular and strength training equipment with personal training available by appointment.





Lobby entry and concierge

Lifestyle Services

- Lifestyle amenities include concierge services, owner storage, valet parking, and chauffeured luxury car and limousine service.
- Your residence will receive professional supervision, administration, management and care.

Residential Services Offered

- Personal chef services and in-residence catering is available through the award-winning on-premises restaurant.
- Grocery shopping and in-residence refrigerator stocking is available for your convenience.
- Twice-daily housekeeping keeps your residence clean and tidy.
- Laundry, dry cleaning and pressing services are at the ready.
- Professional child care services are available.

Business, Events and Technology

- Conference planning, video conference technology, and meeting room rental is available on-site.
- Business resources include printing and document printing, audio-visual needs, and travel planning.
- Technology rentals are available, including wireless laptops, personal audio players, mobile phones and audio-visual equipment.
- Movies, video games and music rentals and delivery are available for your entertainment needs.



The award-winning onsite restaurant, bar and lounge



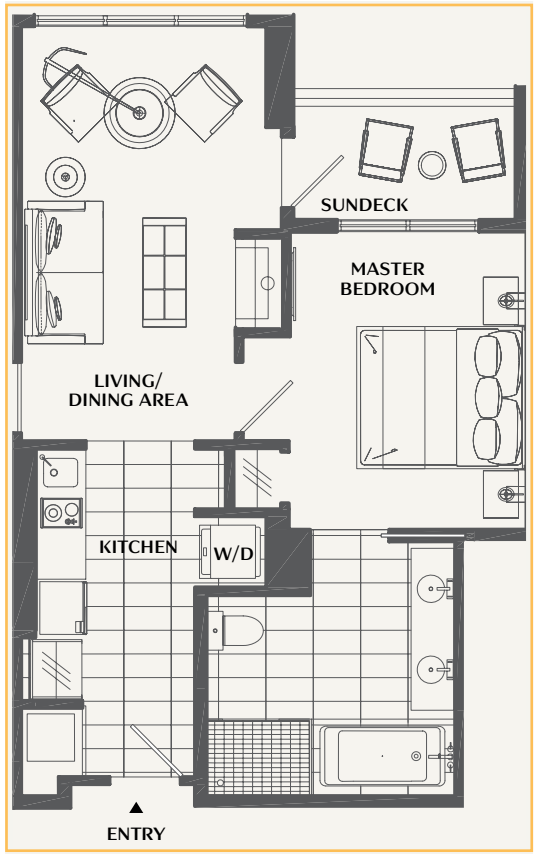
- An exciting après-ski lounge with 87 foot long bar and the beautifully inviting fireplace is a good spot to exchange ski stories.
- The restaurant and bar serves breakfast, lunch and dinner.



Assay Hill Ski Lift as seen from private deck



Assay Hill Lodge at the base of Snowmass Mountain



#630 1-bedroom floorplan

Unit Key

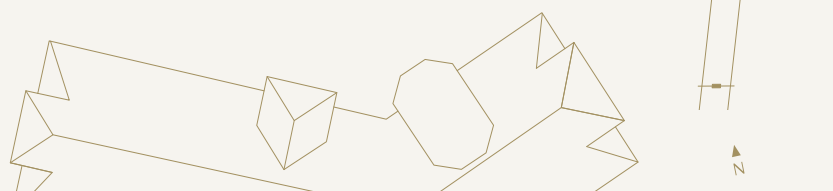
- Studio
- One Bedroom, One Full Bath
- One Bedroom, Two Full Bath
- One Bedroom and Den, Two Full Bath
- Two Bedroom, Two Full Bath
- Two Bedroom, Two Full Bath (Lock Off Studio)
- Two Bedroom, Two Full Bath (Lock Off One Bedroom)
- Two Bedrooms, Three Full Bath (Lock Off Studio)
- Two Bedroom and Den, Three Full Bath (Lock Off Studio)
- Three Bedroom, Three Full Bath (Lock Off Studio)
- Three Bedroom and Den, Four Full Bath (Lock Off Studio)
- Four Bedroom, Three Full Bath (Lock Off Studio)
- Combined Units



Floor Level Key



FOR INTERNAL USE ONLY



REAL ESTATE ON HIGHER GROUND

Details:


Legal Description:	Assay Hill Lodge Condominium, Unit 630 (aka 13530)
Street Address:	130 Wood Road #630, Snowmass Village, CO 81615
Year Built:	2010
Square Feet (heated living):	567 sq ft, per assessor
Bedrooms/Baths:	1/1
Parking:	Heated garage; valet parking
Decks:	Private balcony
Fireplaces:	1 double-sided gas fireplace
Laundry:	Laundry closet with stacked Bosch washer/dryer
Heating:	Forced air; gas
Property Taxes:	\$3,682 (2017)
Homeowners Fees:	\$13,163/year
Real Estate Transfer Tax:	2% of purchase price, paid by Buyer (1% Snowmass Real Estate Transfer Tax & 1% Base Village Metro District)
Price:	\$495,000, furnished
Terms:	Cash, or terms otherwise acceptable to sellers
MLS#:	152967
Property Website:	SnowmassMtnView.com



Assay Hill Lodge backs right up to Assay Hill ski trail

DISCLOSURES: Information herein deemed reliable, but not guaranteed. Due to differences in measurement methods, neither Seller nor Broker can warrant the square footage of any structure or the size of any land being purchased. Broker measurements are for marketing purposes and are not measurements for loan, valuation or any other purpose. If exact square footage is a concern, the property should be independently measured. Buyer to pay pending special assessment for recently completed exterior renovation of complex. Ask listing broker for special assessment details.

NOTE: Some accessories shown in the photographs were used for staging purposes and are not included in the sale. A complete inventory is available upon request.

 © 2018 BHH Affiliates, LLC. An independently owned and operated franchisee of BHH Affiliates, LLC. Berkshire Hathaway HomeServices and the Berkshire Hathaway HomeServices symbol are registered service marks of HomeServices of America, Inc.® Equal Housing Opportunity. Information not verified or guaranteed. If your home is currently listed with a Broker, this is not intended as a solicitation. 04/04/18

Tara Turner | 970.309.7131 | tara@BHHSAspenSnowmass.com | Cory Didier | 970.309.1372 | cory@BHHSAspenSnowmass.com



BERKSHIRE HATHAWAY | Aspen Snowmass Properties
HomeServices

Aspen 534 E. Hopkins Avenue | 970.922.2111 • Next to the Gondola Plaza 555 E. Durant Avenue, Suite 5A | 970.925.5400
Snowmass Village Next to Alpine Bank | 970.923.2111 • BHHSAspenSnowmass.com