



121 OAK RIDGE ROAD | WILDRIDGE UNIT I, LOT 4  
SNOWMASS VILLAGE, COLORADO



*SnowmassMountainView.com*



**BERKSHIRE HATHAWAY**  
HomeServices  
Aspen Snowmass Properties

**LUXURY**  
COLLECTION



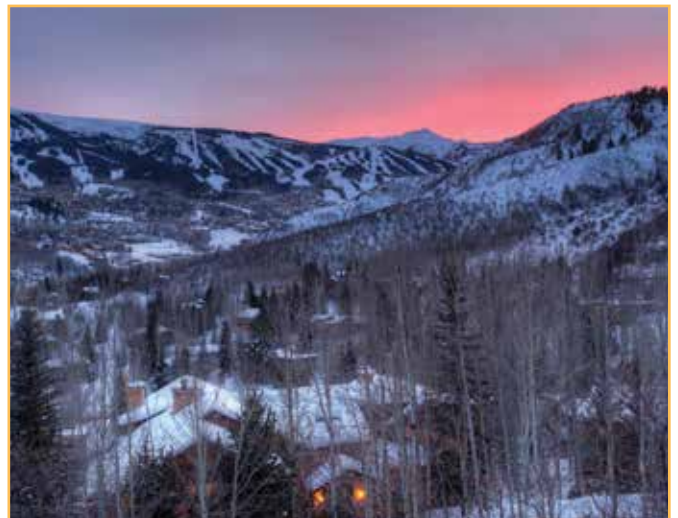


*The Great Room and Adjacent Dining Area*

## 121 OAK RIDGE ROAD SNOWMASS VILLAGE

You can't help but exclaim "Wow!" the moment you walk in the door. A brilliantly designed custom-built home with views from every room and plenty of access to the outdoors, this home sets the bar for the optimal mountain residence. Its south-facing orientation provides all day sun and wall to wall views of the Snowmass ski area as well as views of Aspen Mountain, Aspen Highlands and Buttermilk in addition to the Snowmass golf course. Every detail embraces comfort, style and sophistication – from the custom wood and stonework to the top-of-the-line appliances in the gourmet kitchen to the authentic home theatre. Plus, the serene outside front patio area has a meandering stream bordered by boulders and wildflowers adding summer magic while the second patio area features a hot tub and enjoys the awe-inspiring views.

**\$4,100,000, furnished | [SnowmassMountainView.com](http://SnowmassMountainView.com)**







*The Dining Area with Jaw-Dropping Views of Snowmass Ski Area*



*The Elegant Entry*



*Expansive Open Floorplan*



*Great Room and Dining Area Views at Dusk*

### **Interior Features**

- The fine finishes throughout the home include skip-trowel integral plaster walls, all 8' solid knotty alder doors, custom wrought iron railings and balusters, detailed tiling and custom woodworking.
- Striking custom 10' double metal doors with ironwork open to the stone floor entry and expansive mountain views. The doors' windows open to enable summer cross breezes. A coat closet with built-ins is at-the-ready.
- Spectacular great room views span from the entire Snowmass Ski Area to Aspen Highlands, Ajax Mountain, and Buttermilk. The walnut floors are complimented by soaring vaulted ceilings which include architectural wood trusses with turn-buckle tension rods (so as not to block any of the view) and log accents. Two glass doors open to an elevated outside deck. Rich, warm mountain traditional furnishings invite gatherings around the wood-burning fireplace surrounded in Colorado stone. Stock the wood for the fireplace for easy access from the cleverly designed pass-through in the garage.
- The adjacent dining area has floor-to-vaulted ceiling windows which frame stunning views to dine by, as well as two additional doors with deck access. An elegant dining table seats 10 with beautiful upholstered high-back chairs and is accompanied by a coordinating buffet.



*Main Level Powder Room*



*Kitchen and Breakfast Nook with Views of Snowmass Mountain*

- The generous, gourmet kitchen is a chef's dream with astute details including a pot filler faucet, a warming drawer and 2 Dacor ovens. Knotty alder cabinetry, granite countertops with premium double beveled edges, and a stacked stone backsplash add a touch of Tuscany. The custom center island with hand-carved wood detailing even has a cabinet for the toaster oven. A butler's pantry contains a second laundry area with an Asko stackable washer/dryer. A glass door opens to the adjacent outdoor patio area with a Jenn-Air gas grill, water feature and gardens.
- In addition to the two Dacor ovens, stainless appliances include a Wolf Gourmet 6-burner gas range with custom hood, Sub-Zero oversized side-by-side refrigerator/freezer, Asko dishwasher and KitchenAid microwave and trash compactor.
- A cozy breakfast nook provides extra seating for those who like to socialize in the kitchen area.
- A granite-topped wet bar is constructed with alder cabinetry, glass-front doors, stacked stone backsplash and includes a Marvel wine cooler.
- The main level powder room is stunning with a 12" rough edge stone countertop and a stone vessel sink. A large mirror framed by a massive hammered metal frame is flanked by glass sconces with an aspen leaf motif.





*The Gourmet Kitchen*





*The Master Suite*





*The Master Suite Bath*

- The private master wing located on the main level closes off from the rest of the home. From the luxurious master bedroom, take in pillow views of the entire Snowmass ski area through picture windows set in a wood accented barrel vault. Nod off in the cozy ambiance of the gas-log fireplace with an elegant custom stone surround. An NEC flatscreen TV with Boston sound system speakers is mounted above the fireplace. A glass door opens to a private deck area. The King bed upholstered in brown leather is complemented by exquisite accent pieces.
- The spacious, sumptuous master bath has it all—travertine and granite with elegant double-beveled edges, His & Hers vanity area, corner make up vanity with chandelier, ThermaSol steam shower, Aquatic air-jetted tub and a separate water closet with bidet.
- A generous walk-in closet features professionally designed dark wood built-ins and added skylights for natural light.



*The Master Wing Office*



*Guest Master Suite*



*Guest Master Bath*



*Queen Guest Suite*



*Queen Guest Suite Bath*

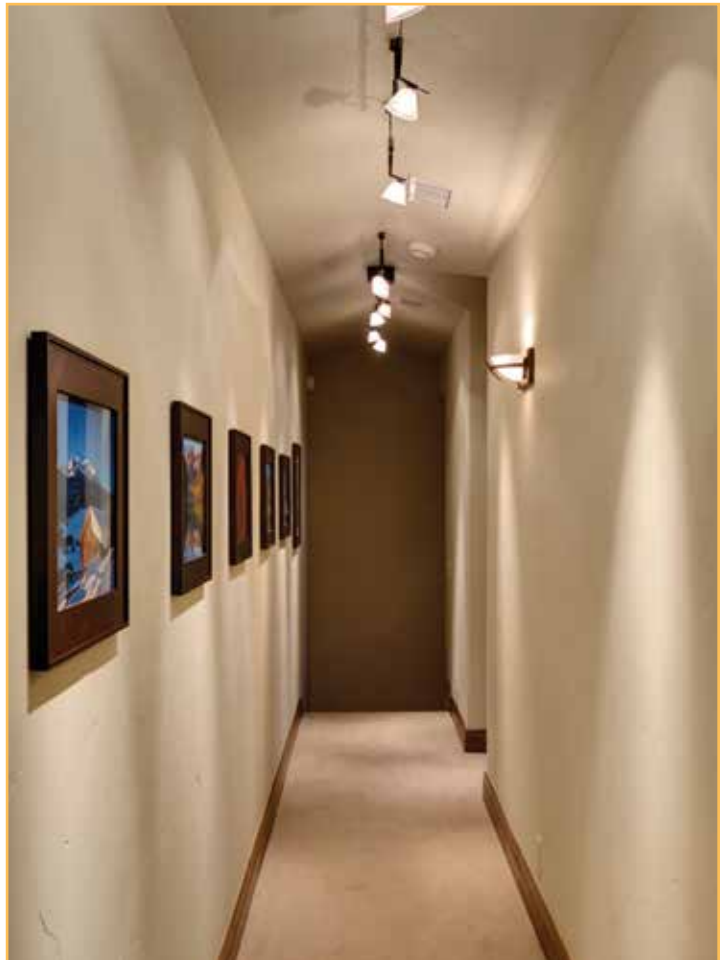
- The guest level contains three well-appointed bedroom suites—all with mountain views and access to an outside walkway to the covered patio and hot tub. All have ceiling fans and walk-in closets with custom built-ins.
- The sunny guest master suite features spectacular 180 degree pillow views of the Snowmass ski area, a handsome Queen bed of wood and leather, and beautiful furnishings and accent pieces. The ensuite bath is crafted of slate tile and granite, including a double vanity, steam shower, and separate water closet.
- The cheerful middle guest bedroom sleeps 3 with a set of twin beds and a day bed all dressed in animal print with blue turquoise accents. Antler lamps with hide shades add the perfect touch. The ensuite bath has a separate vanity area with granite countertop and a tile tub/shower surround with granite accents.
- Guest bedroom #3 features an inviting Queen bed and gorgeous dark wood furnishings. The ensuite bath of limestone and granite has a double vanity and a shower.



*Twin Guest Suite*



*Twin Guest Suite Bath*



*Hallway Connects Guest Suites*



*Family Room Opens to Patio with Hot Tub*





- All you need is the popcorn for an authentic experience in the home theatre room with its 110" screen, Runco Projector, theatre floor lighting, 8 cushy seats, a wood-accented barrel vault and black velvet curtains. The theatre also has its own powder room.
- The mudroom/laundry room is equipped with a bench for kicking off boots, wrought iron coat hooks, Kenmore stackable washer & dryer, stainless laundry sink and built-in cabinets.
- The casual family room on the walk-out level is anchored by a gas-log fireplace surrounded in stone and flanked by built-in shelving for books, games and family photos. Two plush leather sofas welcome the family and friends to hang out and recap the day's adventures. A Vizio flatscreen TV also exists here.
- From the family room, double glass doors open to an outdoor covered patio accessing a sunken hot tub and sitting area with views of all 4 ski areas.
- Even the garage has windows and views! Not your typical garage, this one is heated, has skip trowel plaster walls, baseboard trim, a textured concrete floor with drain, and a hose bib. The wood storage in the garage closet accesses directly under the fireplace in the great room to make putting another log on the fire with ease. The garage is oversized with a work bench closets and room for two cars plus a motorcycle, snowmobile or other essential toys.





*The Home Theater*

#### **Additional Features**

- Radiant heat with individual thermostats in each room.
- Humidifier system in master bedroom, kitchen, dining room and great room.
- Destrat fan and duct system moves hot air to crawl space or downstairs hall.
- Upper level prepped for A/C.
- Whole house stereo, Wi Fi, and outdoor speakers.
- Lutron lighting system with numerous scenes available for Great Room, Kitchen, and Dining Room.
- UV protected windows in the great room, dining room, and master bedroom.
- Large crawl space for storage.
- Fully monitored alarm system.

#### **Exterior Features**

- Roofing made of re-cycled rubber.
- Copper barrels, gutters and downspouts.
- This home has fabulous southern exposure with spectacular, expansive views of all four ski areas.
- Enjoy easy access to the outdoors with patios and decks off of the great room, dining room, kitchen, master bedroom, family room, and all downstairs bedrooms. The upper decks are comprised of exotic wood with stainless screws.
- The property adjoins open space providing additional privacy.



*View to Sam's Knob and Garrets Peak*



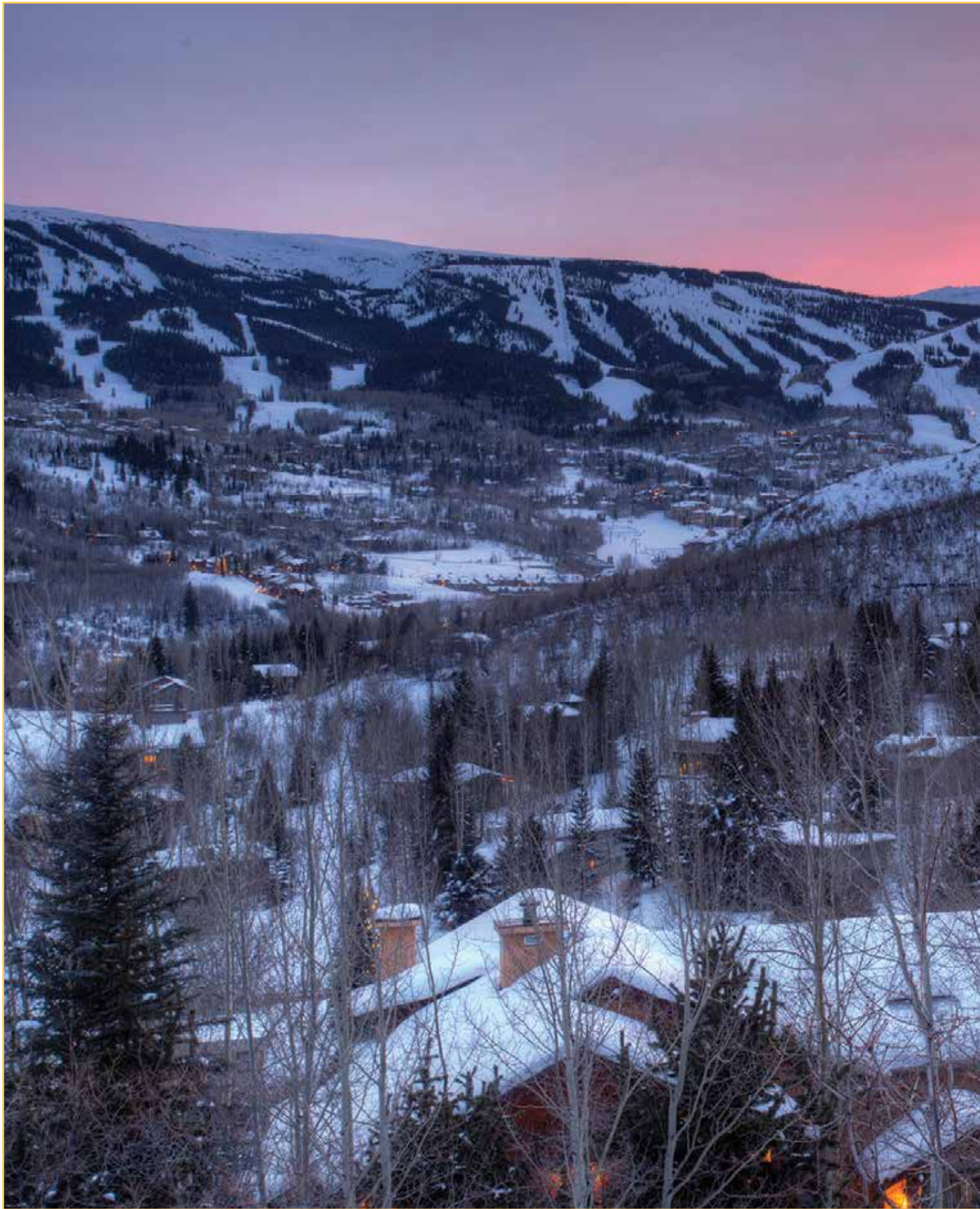
*View of the home and the distant mountains*

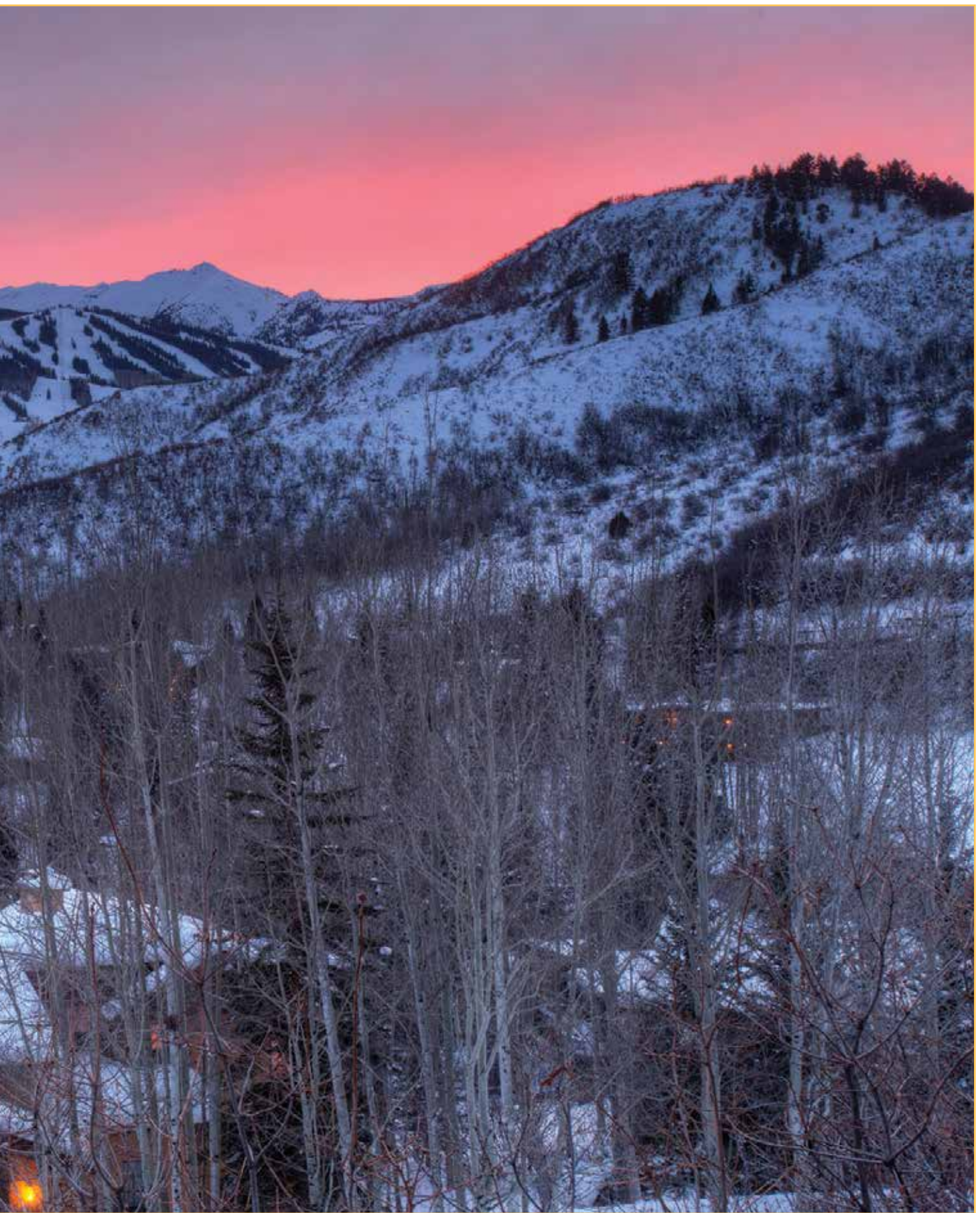


*Serene summer setting*



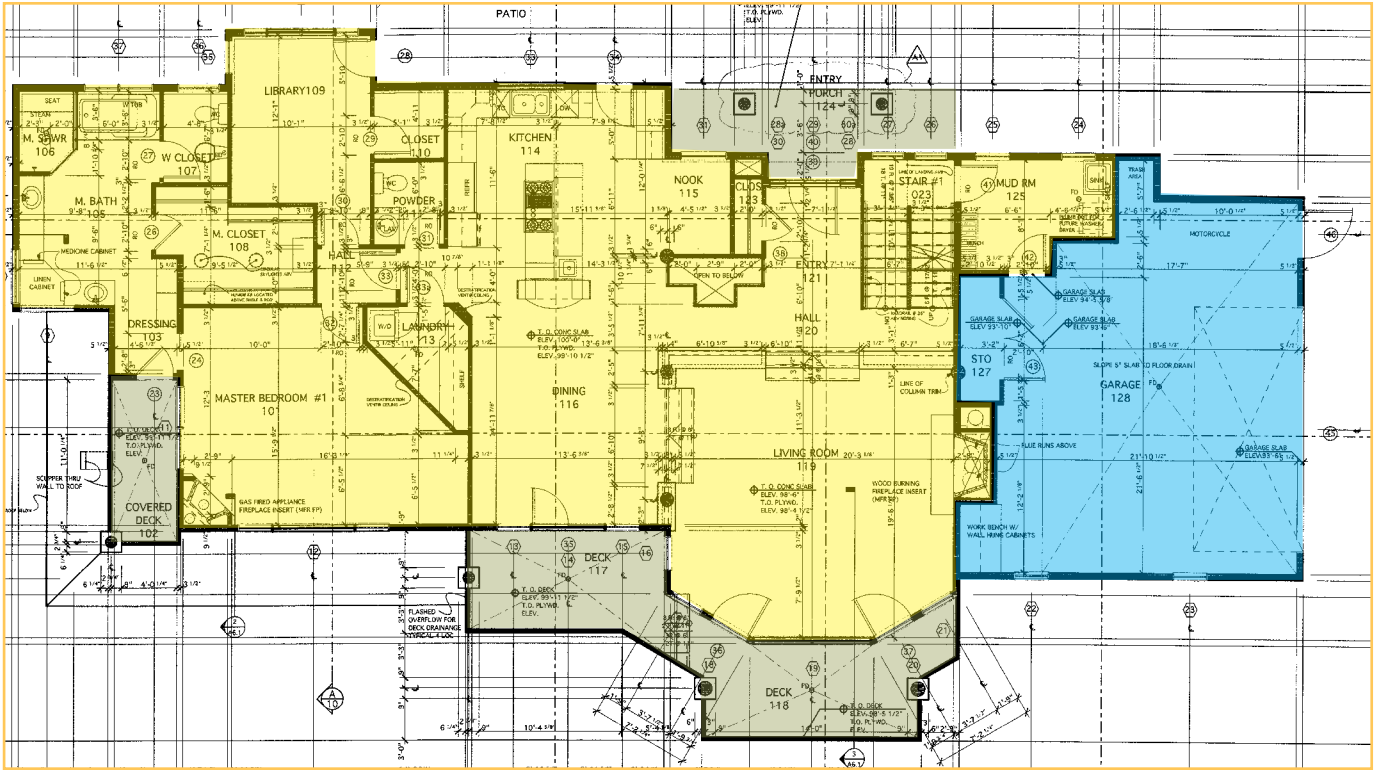
*Home exterior*



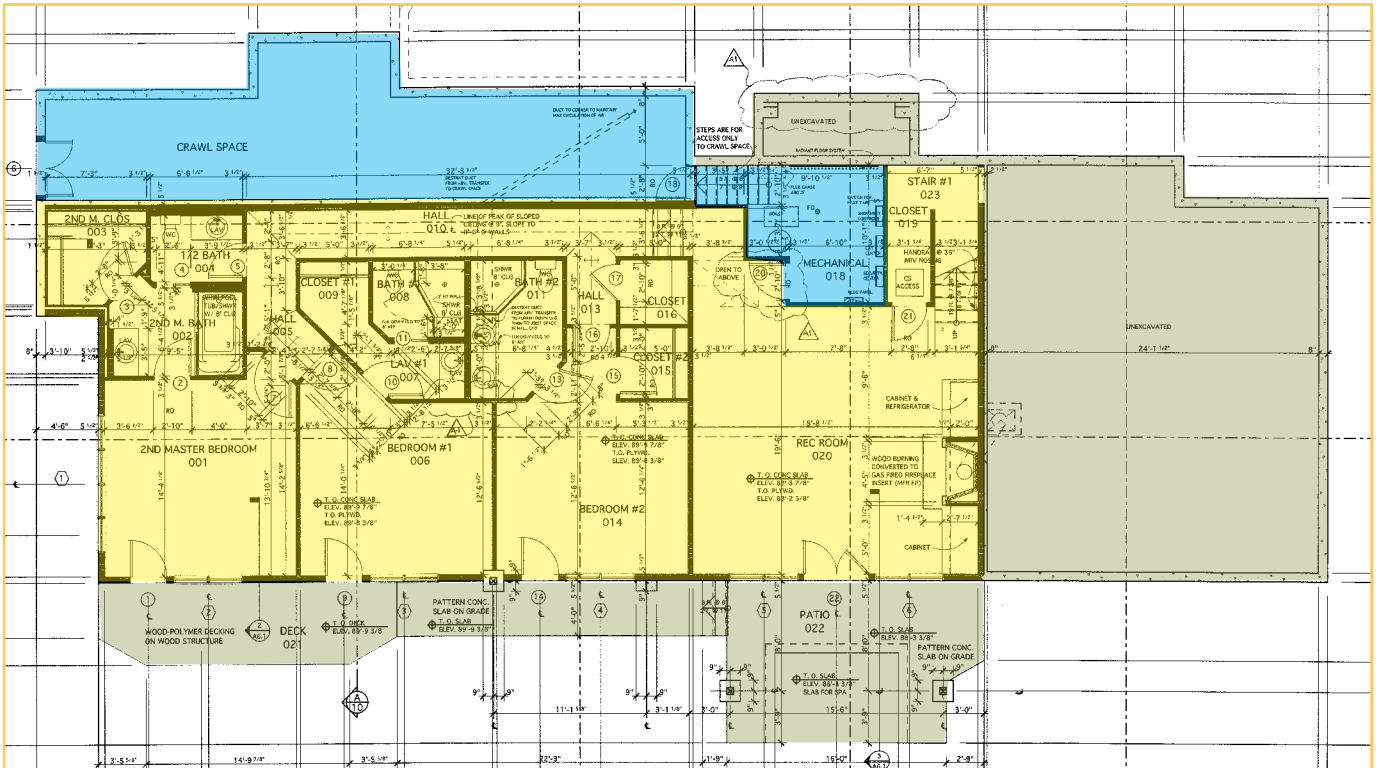


*Beautiful dusk view of Snowmass Ski Area*

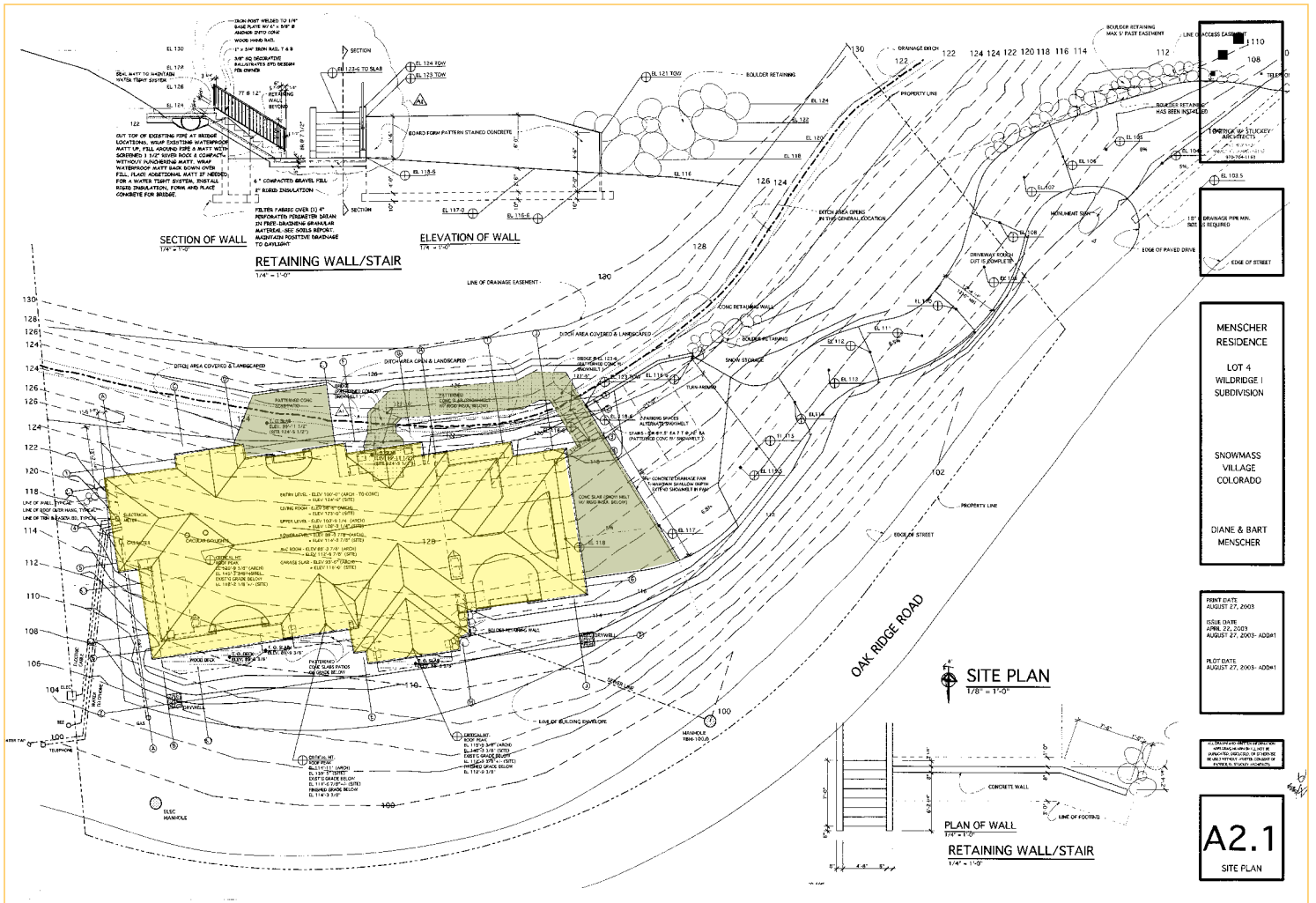
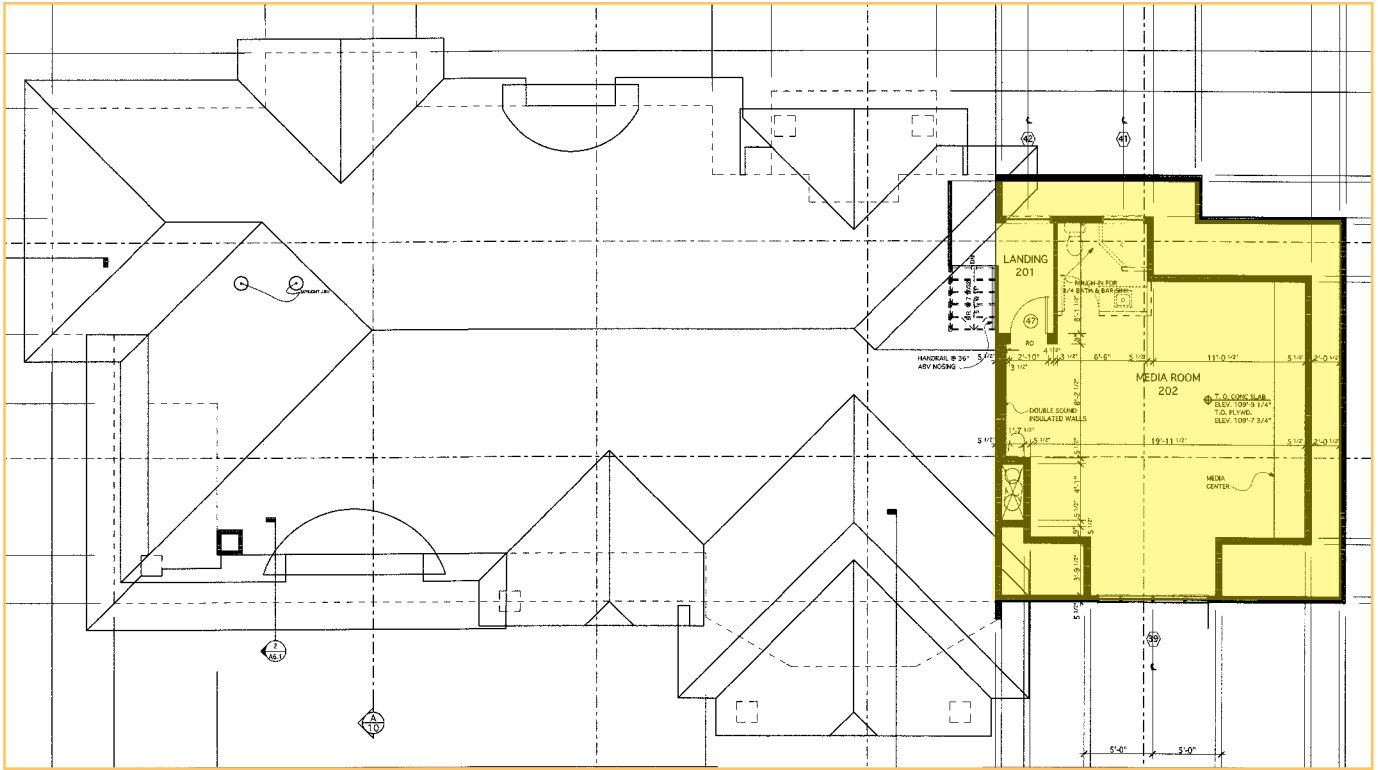
# Main Level Floorplan



# Lower Level Floorplan



# Home Theater Room (above garage)





# REAL ESTATE ON HIGHER GROUND


## Details:

<b>Legal Description:</b>	Lot 4, Wildridge Unit one ; Pitkin County, Colorado
<b>Street Address:</b>	121 Oak Ridge Road, Snowmass Village, Colorado 81615
<b>Elevation:</b>	8216 feet above sea level
<b>Year Built:</b>	2005
<b>Square Feet (heated living):</b>	4531 sq ft per Town of Snowmass Village, plus 631 sq ft garage
<b>Lot Size:</b>	41,418 sq ft (0.95 acres)
<b>Bedrooms/Baths:</b>	4 + office/ 4 full; 2 half baths
<b>Decks/Patio:</b>	2 decks / 2 patios, 1 with hot tub
<b>Fireplaces:</b>	3 (1 woodburning and 2 gas)
<b>Laundry:</b>	2 laundry rooms; each with stackable washer/dryer
<b>Heating:</b>	Radiant heat
<b>Parking:</b>	Attached over-sized two-car garage
<b>Views:</b>	Four ski areas, golf course and beyond
<b>Security:</b>	Alarm system
<b>Property Taxes:</b>	\$13,145 (2016)
<b>Homeowners Fees:</b>	\$90/year (Snowmass Homeowner's Association)
<b>Real Estate Transfer Tax:</b>	1% of purchase price paid by Buyer
<b>Price:</b>	\$4,100,000, furnished
<b>Terms:</b>	Cash, or terms otherwise acceptable to Sellers
<b>MLS#:</b>	149895
<b>Property Website:</b>	WildridgeFamilyHome.com



Front entry and patio

DISCLOSURE: Information herein deemed reliable, but not guaranteed. Due to differences in measurement methods, neither Seller nor Broker can warrant the square footage of any structure or the size of any land being purchased. Broker measurements are for marketing purposes and are not measurements for loan, valuation or any other purpose. If exact square footage is a concern, the property should be independently measured.

 © 2017 BHH Affiliates, LLC. An independently owned and operated franchisee of BHH Affiliates, LLC. Berkshire Hathaway HomeServices and the Berkshire Hathaway HomeServices symbol are registered service marks of HomeServices of America, Inc.® Equal Housing Opportunity. Information not verified or guaranteed. If your home is currently listed with a Broker, this is not intended as a solicitation.



**BERKSHIRE HATHAWAY**  
HomeServices  
Aspen Snowmass Properties

**LUXURY**  
COLLECTION

**Mark Lewis** | 970.948.4734 | [mark@BHHSAspenSnowmass.com](mailto:mark@BHHSAspenSnowmass.com)

**Aspen** 534 East Hopkins Avenue | 970.922.2111

**Snowmass Village** Next to Alpine Bank | 970.923.2111

**BHHSAspenSnowmass.com**