

895 S. STARWOOD

ASPEN, COLORADO



BERKSHIRE HATHAWAY | Aspen Snowmass Properties
HomeServices



Great room with vaulted ceilings, stone fireplace and reclaimed timbers surrounded by large windows and open to kitchen and dining



895 S. STARWOOD ASPEN

What: Tucked in a beautiful forest is a private, secluded family home that is a total mountain retreat. Peace and quiet prevail with only the sounds of quaking aspen leaves and singing birds. Crafted with gorgeous stonework and reclaimed timbers, designed with multiple levels to optimize privacy and provide an in-the-woods feeling throughout. A wood-burning fireplace surrounded by Colorado stone, a heavenly master suite with private lounging decks, and a divine year-round covered outdoor living area create an enchanting wooded refuge.

Where: In a world-away setting just minutes to Aspen—Starwood.

Why: Private, serene and secure. A retreat from the vitality of Aspen.

Numbers: \$2,995,000

Website: StarwoodAspenHome.com





Open dining and kitchen areas overlook the great room

Interior Features

- Tall double doors open to a light and bright entry filled with windows and graced with lovely wood floors. An intriguing chandelier suspends from a white vaulted wood ceiling with exposed beams. There is a windowed alcove for hanging coats.
- Step down in the living room where you will feel like you are sitting in the woods. Large picture windows look out to the surrounding towering evergreens and quivering aspens. Vaulted ceilings with exposed beams all painted white enhance the spacious feeling. The wood-burning fireplace is surrounded by a wall crafted of Colorado stone with stacked stone accents and reclaimed timbers.
- Dine beneath the antler chandelier that suspends from the vaulted ceiling in the dining area that opens to the living room.
- The open, roomy, fit-for-a-family kitchen features windows framing forest views, granite countertops, pine cabinetry with iron hardware, a walk-in pantry, double stainless sink and a large bar counter. A door opens to a patio and surrounding natural lawn.
- Top-of-the-line stainless appliances include a large Sub Zero refrigerator with freezer drawer, Jenn-Air flat-top electric range with grill, Jenn-Air double convection oven and GE Profile dishwasher.



Walk-in pantry and back door to yard off kitchen



Master suite with glass doors open to a covered deck and sunny morning yoga and lounging area



Extraordinary tiled master bath with vaulted ceilings, walk-in shower, separate water closet and huge closet with built-ins



Covered deck and lounging area connected to the master suite

- Paradise is found in the very private, heavenly master suite. Forest surrounds you through to-the-ceiling picture windows. Vaulted ceilings are highlighted by exposed beams and trusses. Rustic double doors in a corner conceal a TV and/or mini-fridge. A glass door opens to a sitting area on a covered deck where you can sip a cup of coffee or enjoy a lounging deck for stretching out and soaking up the sun.
- Mosaic and hand-painted decorative tile, vaulted ceilings with exposed beams and a skylight highlight the spacious, luxurious master bath. Look out to the forest while soaking in the tub. The large shower has a built-in bench and the double vanity features generous counter space. There is a separate water closet and the dressing area includes a double-mirrored closet, a lockable closet, and a built-in linen cabinet and chest of drawers.
- Tree tops and blue sky views through the atrium follow you upstairs to a sweet sitting area—a lovely spot for contemplation or to read a book. An iron and crystal chandelier suspends above.
- Reclaimed barn wood walls, exposed trusses & beams and windows to the forest create a warm, cabin-in-the-woods feeling in the upper family/TV room. A gas fireplace with Colorado stone surround adds a modern touch. This is where you steal away for a quiet conversation, or to play music.
- The lovely powder room features an antique-style vanity with hammered copper sink and oiled bronze fixtures flanked by wrought iron sconces. The flooring is travertine tile and (of course) there is a window to the trees.

- Step up to the guest bedroom with forest views, luxurious soft carpeting, and a partial vaulted ceiling.
- The vaulted ceiling in the inviting ensuite bath enhances its spaciousness. Iron and amber glass sconces flank the travertine topped dark wood vanity with oiled bronze fixtures. The tub/shower is surrounded by 12" ceramic tile with stone accent tiles. Peek out to the wild rose bushes in the forest.



Powder room



Light filled atrium and reading area



Upper level family/TV room has a gas fireplace with Colorado stone surround, reclaimed timbers and hardwood floors

“Porch Rules—enjoy each season, put your feet up, visit with friends, listen to the birds, read a good book, take a nap....celebrate!”





Exterior Features

- An undeniable high point of the property is the large covered patio with Colorado stone, reclaimed timbers & sandstone surround built-in flower boxes. This delightful area offers outdoor living and dining year-round. Metal light fixtures mounted on supporting timbers enable evening enjoyment.
- The doors of the 2-car garage are comprised of reclaimed barn wood.
- Colorado sandstone steps wind their way along gardens and aspen trees to the huge double front door.
- Natural grassy areas around the home provide room for play.
- The tranquil forest setting offers privacy, serenity and adventure for kids and dogs.
- The exterior exemplifies superior craftsmanship. It is comprised of Colorado stone with stacked stone accents and corrugated metal, all complemented by reclaimed timber accents.

The Starwood Neighborhood

- Starwood is an established and exclusive gated community of approximately 96 homesites.
- Amenities of the Starwood include an on-site resident manager, a 41-acre common area horse pasture, tennis courts, an unmanned post office, conference center, more than 7 miles of lightly-trafficked paved roads (also ideal for walking or biking), miles of nearby hiking, mountain biking and X-C ski trails, and a community, state-of-the-art water system which includes the ability to irrigate landscaping. A gatehouse with 24/7 security is at the entry off of Trentaz Drive, and the only way into the development. See www.starwood.org for additional information about the community and its homeowner association.

A true Colorado property...everything about this outdoor living and dining space is naturally engaging



Step up to yet another guest bedroom with forest view, luxurious soft carpeting, and a partial vaulted ceiling. Situated close to the master, could be ideal for a nursery or private office.



Adjoining guest bath connected to the guest bedroom pictured above.



Residing on the lower level, this light and airy guest bedroom ensuite has windows and glass doors to the natural wood setting and hot tub patio.



The lovely ensuite bath features ceramic tile with decorative mosaic tile accents in the shower and marble topped vanity.



Garden level guest master suite with glass door to outdoor hot tub

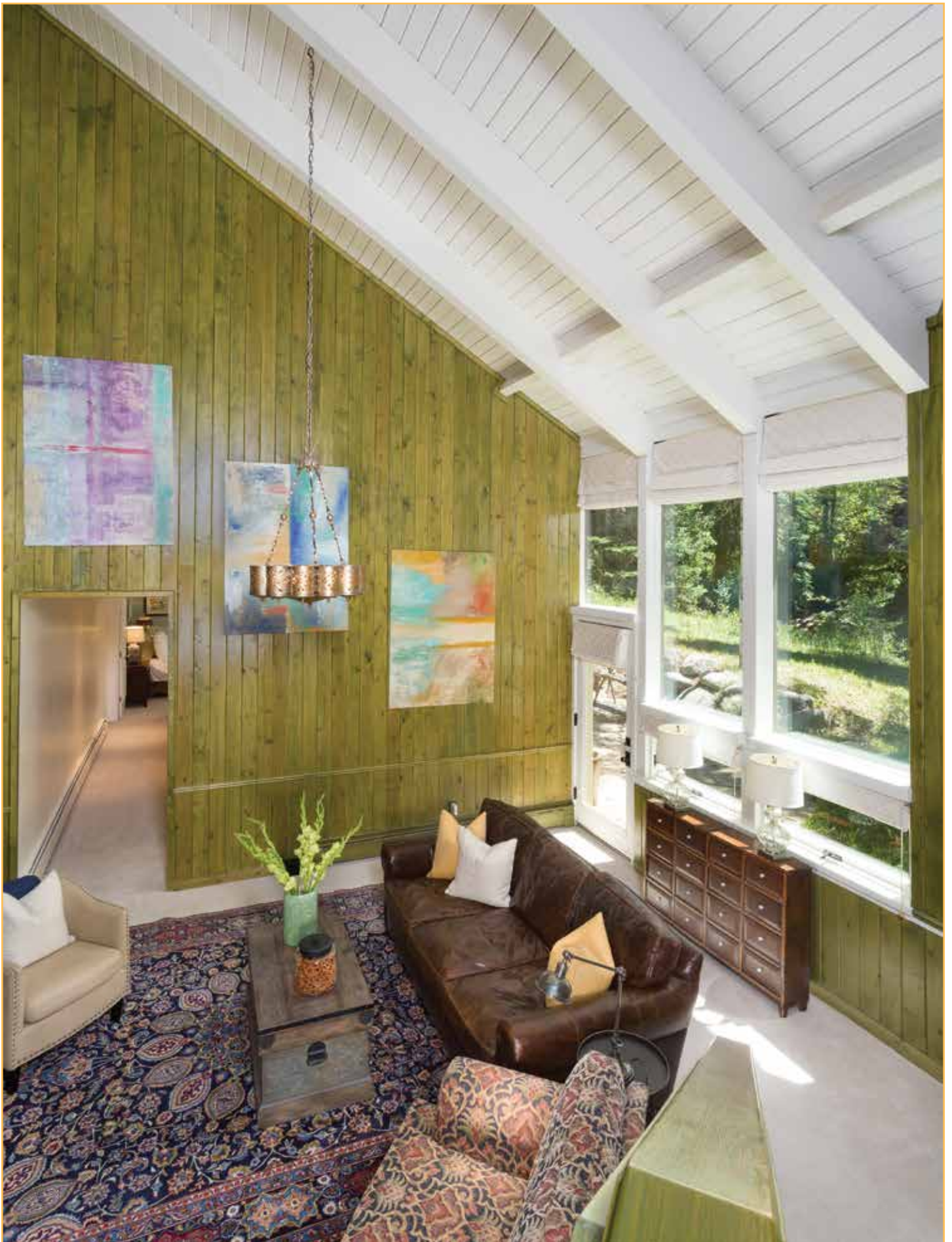


Guest master bath connected to garden level suite above is highlighted by a beautiful carved wood vanity with travertine top and a generous travertine tile shower with a stone tile art accent. There is a separate water closet and clothes closet.



Main level guest bedroom with bath on hall

- The main level guest bedroom has a glass sliding door that leads to a patio and a natural grassy area. Just steps to the hot tub.
- The handsome adjacent bath that also serves as a powder room features a marble vanity top complemented by a gray stone tile accent wall and shower. (not pictured)



The lower family/TV room is a warm gathering place of green stain-washed knotty pine walls and soaring vaulted ceilings with exposed beams. Huge picture windows frame trees and bluebird skies. A door opens to a stone patio and hot tub.

REAL ESTATE ON HIGHER GROUND


Details:

Legal Description:	STARWOOD Lot: R-44 STARWOOD FIVE
Street Address:	895 S. Starwood Drive, Aspen, CO 81611
Elevation:	8501'
Lot Size:	3.11 acres (135,472 sq ft)
Square Feet (heated living):	5440 sq ft per True Dimensions
Bedrooms/Baths:	5/5½ + 2 family/TV rooms
Year Built/Remodelled:	1979/2014
Decks/Patio:	2 covered
Parking:	2-car garage
Fireplaces:	2 (1 gas and 1 woodburning)
Laundry:	Room
Heating/Cooling:	Combination of hot water gas-fired baseboard and electric
Extras:	Hot tub, covered patio covered master deck
Occupant:	Occasional owner use
Property Taxes:	\$10,109/yr (2017)
Homeowners Fees:	\$139/year
Real Estate Transfer Tax:	No
Price:	\$2,995,000, unfurnished
Terms:	Cash, or terms otherwise acceptable to Sellers
MLS#:	149817
Property Website:	<i>StarwoodAspenHome.com</i>



Leah Moriarty | 970.379.9107 | leah@BHHSAspenSnowmass.com

DISCLOSURE: Information herein deemed reliable, but not guaranteed. Due to differences in measurement methods, neither Seller nor Broker can warrant the square footage of any structure or the size of any land being purchased. Broker measurements are for marketing purposes and are not measurements for loan, valuation or any other purpose. If exact square footage is a concern, the property should be independently measured.

 © 2018 BHH Affiliates, LLC. An independently owned and operated franchisee of BHH Affiliates, LLC. Berkshire Hathaway HomeServices and the Berkshire Hathaway HomeServices symbol are registered service marks of HomeServices of America, Inc.® Equal Housing Opportunity. Information not verified or guaranteed. If your home is currently listed with a Broker, this is not intended as a solicitation.



BERKSHIRE HATHAWAY | Aspen Snowmass Properties
HomeServices

Aspen 534 E. Hopkins Avenue | 970.922.2111 • Next to the Gondola Plaza 555 E. Durant Avenue, Suite 5A | 970.925.5400
Snowmass Village Next to Alpine Bank | 970.923.2111 • BHHSAspenSnowmass.com